

X-LIN Long Range Wireless LAN Platform

LAN expansion

FOR

3 Hospital Yards as One Closed Network

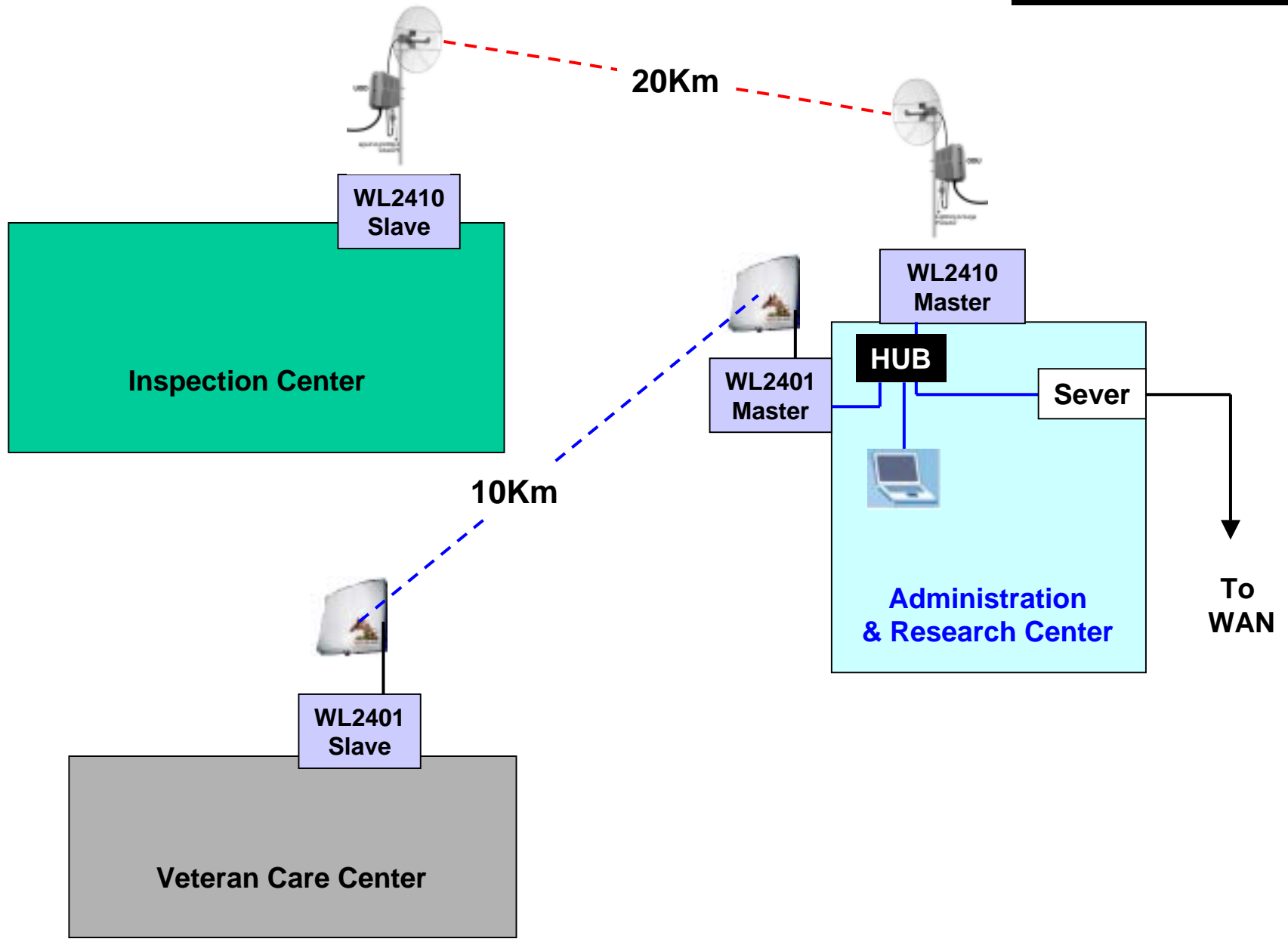
Yu-Li Hospital, Ministry of Health

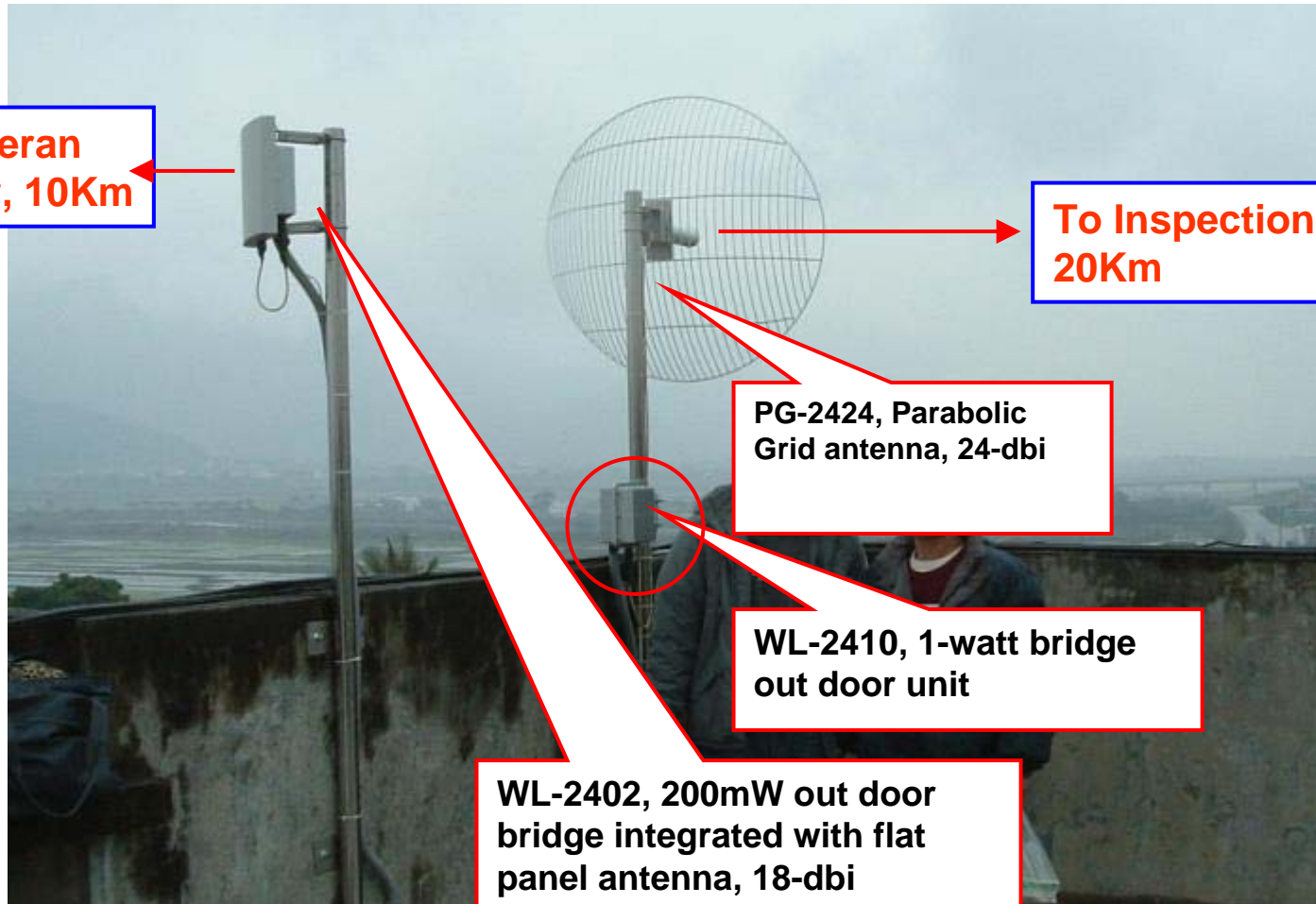
Feb. 2005

Network Description

1. Wireless LAN connectivity for 3 hospital yard in E. Taiwan. Yu-Li Hospital, Ministry of Health
2. To replace the T1 (1.5Mbps) leased line (US\$800 per month)
3. 3 yards connected by wireless LAN (11Mbps), one time investment worth one year T1 subscription cost.
4. Close and secured private and close network, safer than T1 public network
5. Connecting 3 yards over 30Km
6. Very much Faster, safer and cheaper !!

Network Scenario





**On roof of Administration & Research Center.
WL-2410 + PG-2424 point to Inspection Center
WL-2401 (FP-2418 integrated) point to Veteran Care Center**

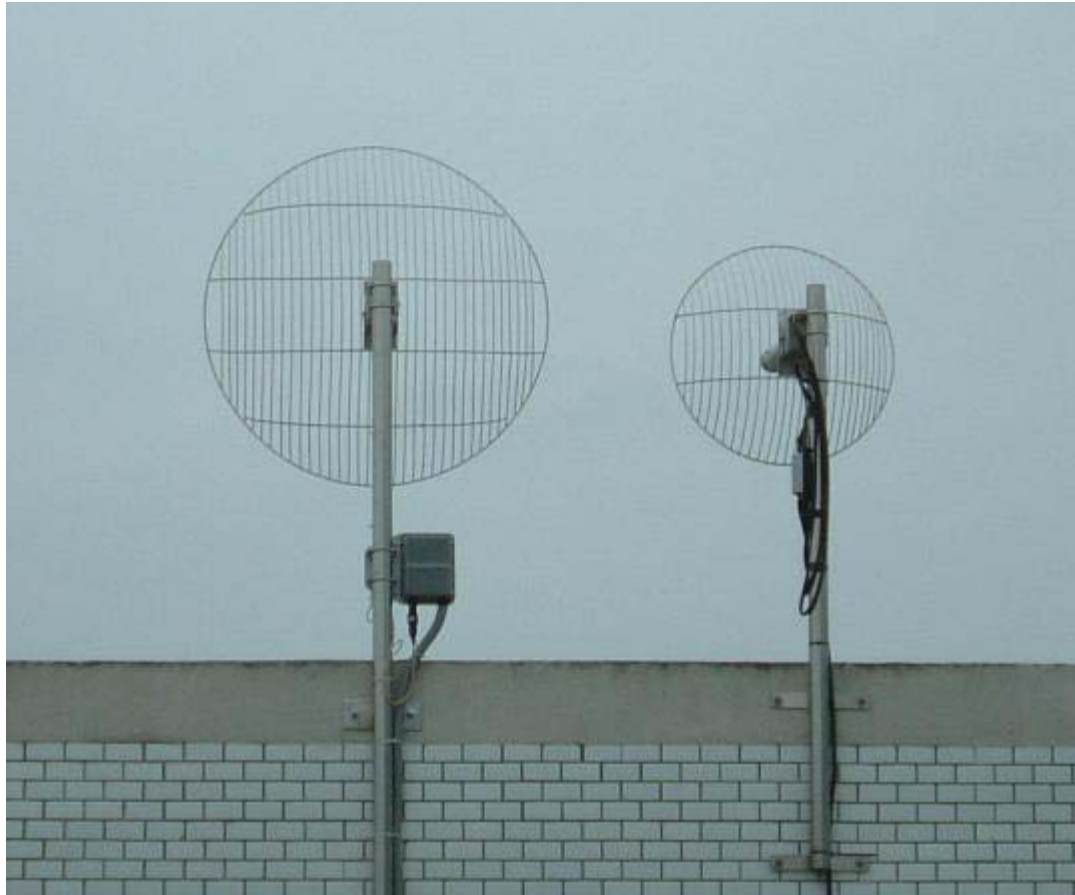
**WL-2401 (flat panel antenna integrated)
On roof of Veteran Care Center**



WL-2410 (Slave) with PG-2424 antenna on roof of Inspection Center



WL-2410 (Slave) with PG-2424 antenna on roof of Inspection Center



**Yu-Li Hospital,
Ministry of Health
(Cabinet Level)**

**WL-2410 (Slave) with PG-2424
antenna on roof of Inspection
Center**

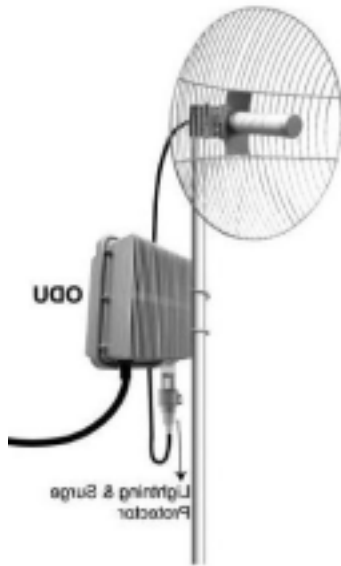


Component 1

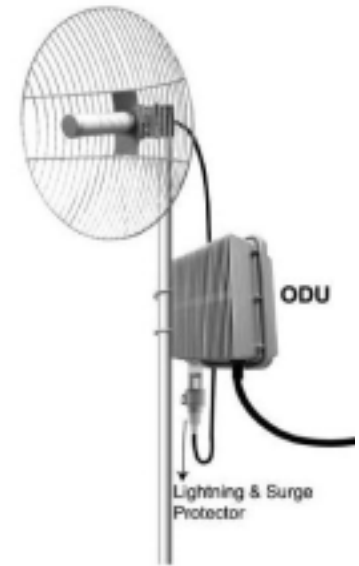
WL-2410, 1-watt Bridge

PG-2424, Grid 24-dbi antenna

**For 20Km connecting
Administration and Inspection
center (20Km)**



**Administration
& Research Center**



Inspection Center



Component 2:

WL-2401

200 mW, Outdoor Bridge
with 18-dbi flat-panel
antenna integrated



Connecting Administration
and Veteran Care Center
(10Km)

X-LIN
Innovation
Thank you !

Hotware International Co., Ltd.

www.hotware.com.tw

business@hotware.com.tw

Tel : +886-3-4639125

Fax ; +886-3-4639367

Integration Center

integrate@hotware.com.tw