

X-LIN Long Range Wireless LAN Platform

Proposal

FOR

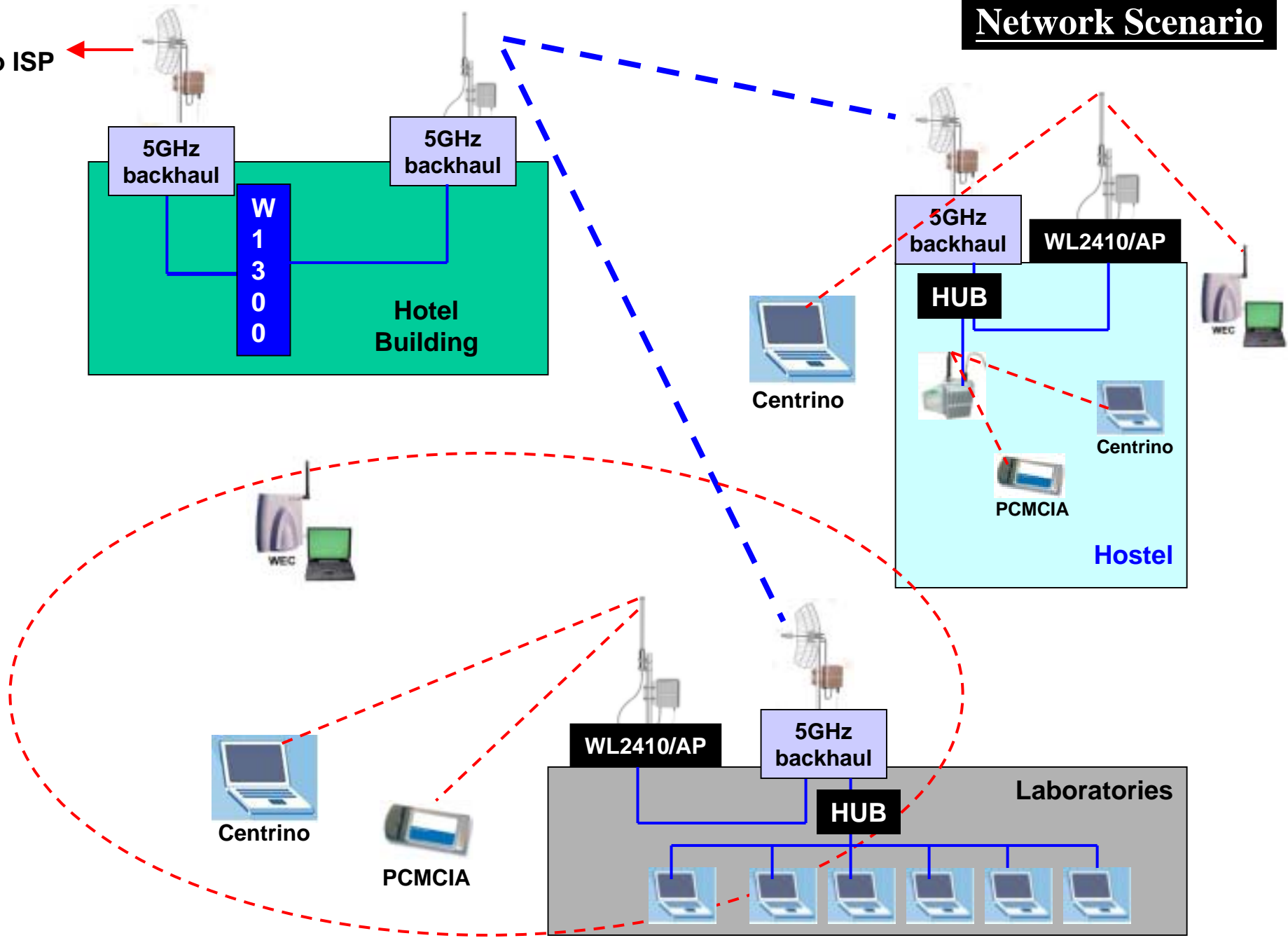
Campus Hot-Spot

Network Description

1. Wireless Internet connectivity for students in campus
2. Students device: all wi-fi complied CPE: PCMCIA, USB adapter, Centurino, WEC unit.....
3. Clients covered by outdoor AP units can do roaming among the AP units.
4. Network access subject to authentication and billing system.
5. WL-5805 (5.8GHz Bridge unit) as the back-bone to form the data network while WL-2410/AP (2.4GHz AP units) to blanket the campus, hence fully 'wireless' and interference free.

Network Scenario

To ISP



Component 1

5GHz Bridge Mode : as the data 'backhaul' for connecting the AP unit on nodes.



Network Component 2

**WL-2410/AP unit
1 watt**

**With OM-2415
Omni antenna 15-dbi**

**Wire (by CAT5) connected to
WL-5805/Bridge **to carry the
clients.****



Network
Component 3
WEC-2210



WEC-2210, 200mW

**With rubber omni, 3-dbi
antenna**

Network Component 4

Other Wi-Fi complied devices



PCMCIA



Centrino

USB adapter, PCI, Wi-Fi compliance

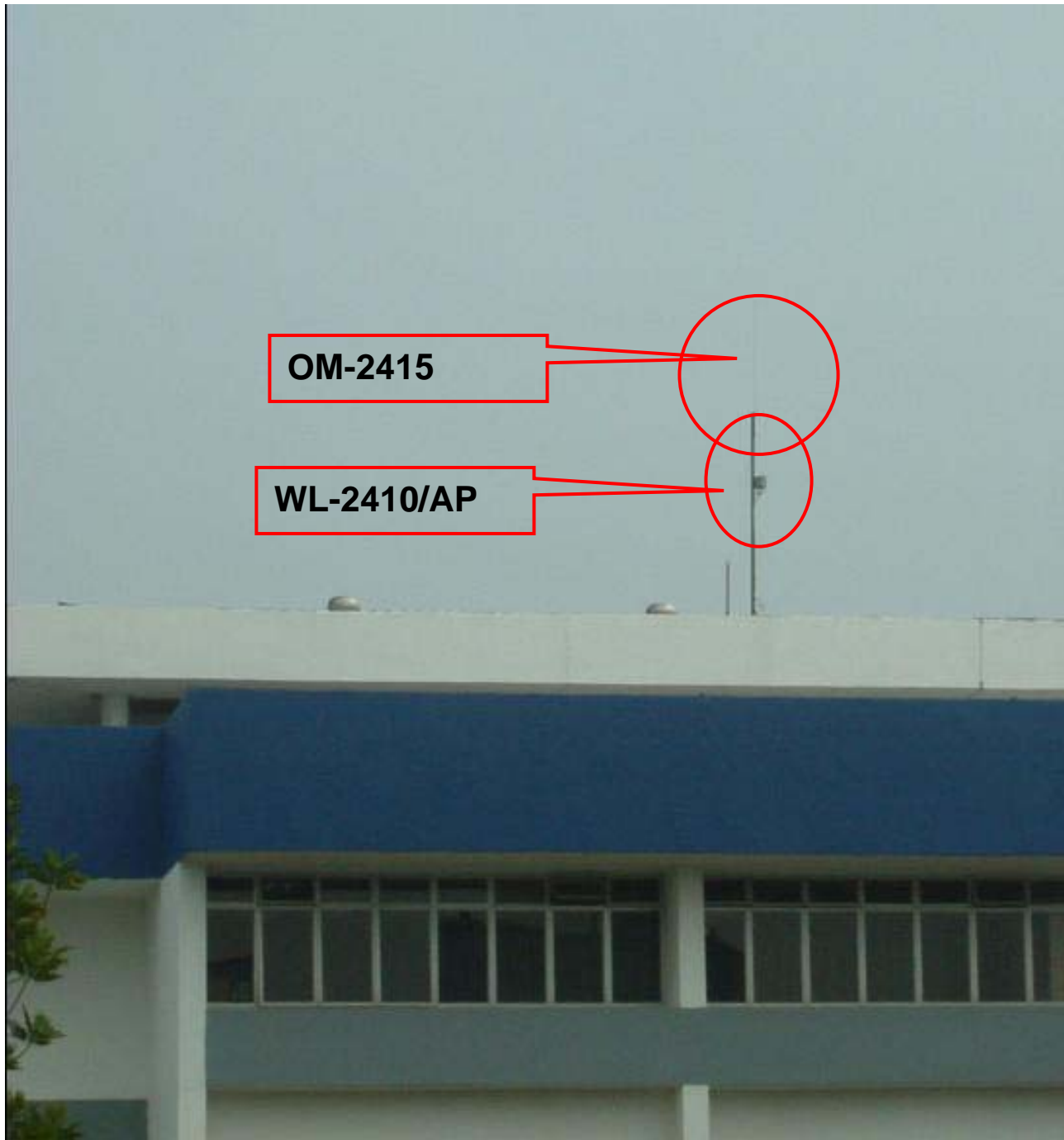
Component 5

W-1300 Network Administrator for client authentication and management.



1200 subscriber account
DHCP server
User Management
Current Status Monitoring
Route re-Direction and Extension
Bandwidth management

500 users on-line simultaneously
Authentication
Traffic Report
Firewall
Service Expansion
Billing.....



OM-2415

WL-2410/AP

Our university hot-spot site at Kula Lumpur Infrastructure College University (KLICU) in K.L. Malaysia

WL-2410/AP with omni antenna on roof of Administration Building

Each WL-2410/AP covers 800m radius, 240 student users

WL-2410/AP(2) with OM-2415 at Campus



X-LIN
Innovation
Thank you !

Hotware International Co., Ltd.

www.hotware.com.tw

business@hotware.com.tw

Tel : +886-3-4639125

Fax ; +886-3-4639367

Integration Center

integrate@hotware.com.tw