

X-LIN Long Range Wireless LAN Platform

Hotspot

FOR

World Summit of French Speaking Nations

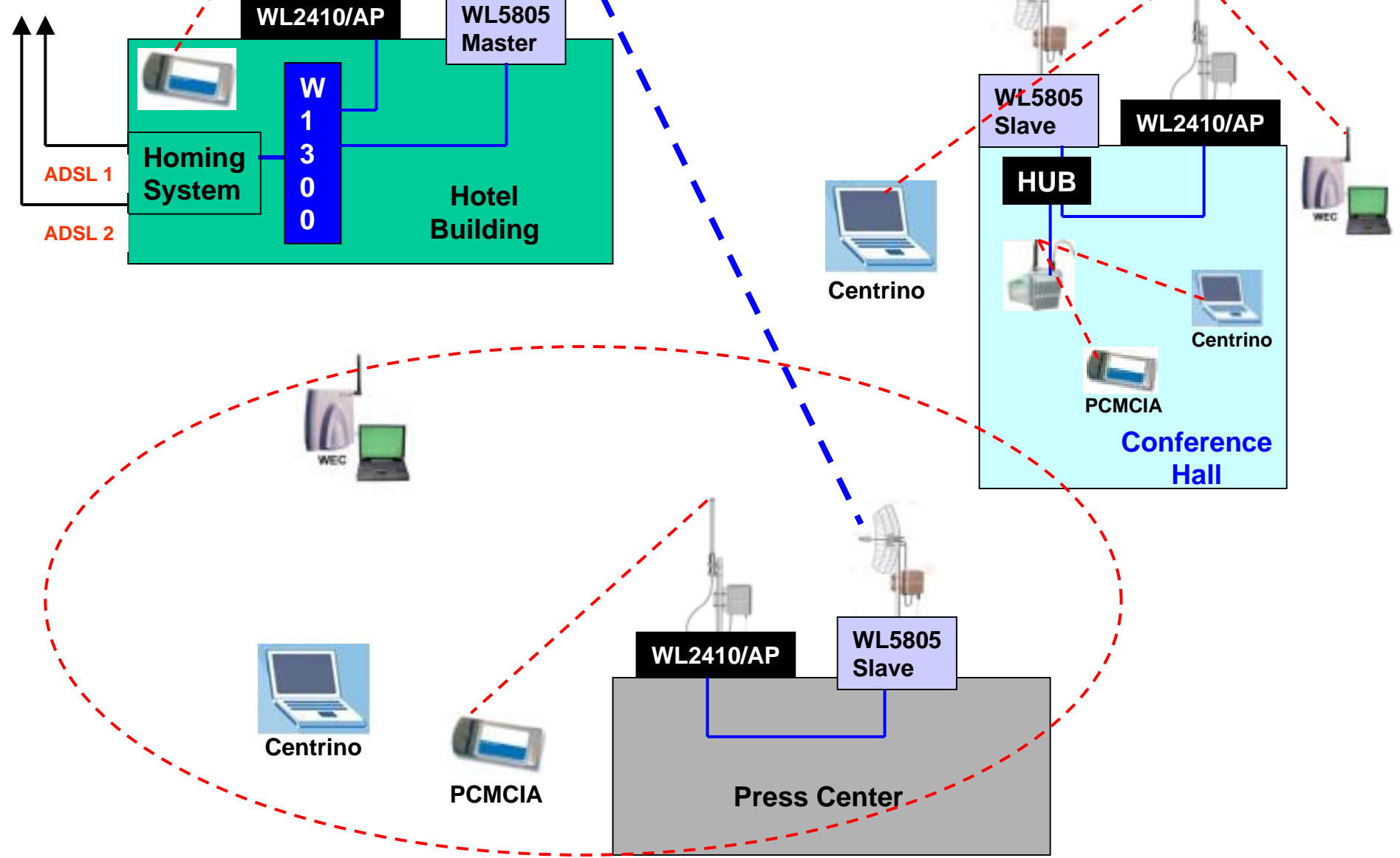
Nov. 25, 2004 ~ Nov. 30, 2004

Network Description

1. Wireless Internet connectivity for participants of summit: total 103 nations: 103 presidents and prime ministers, 500 delegate and press;
2. Participants device: all wi-fi complied CPE: PCMCIA, USB adapter, Centurino, WEC unit.....
3. Clients covered by WL-2410/AP in door and out door.
4. Network access subject to authentication system.
5. WL-5805 (5.8GHz Bridge unit) as the back-bone to form the data network while WL-2410/AP (2.4GHz AP units) to blanket the campus, hence fully 'wireless' and interference free.
6. After the summit, the system: 16 x backhaul + 32 x AP, will be expanded to cover whole capital city as city hot-spot.

Network Scenario

To WAN





International Hotel in Ouagadougou, capital city of Burkina Faso, as the center for the summit.

In front of the Hotel is the WL-2410/AP with 18-dbi flat panel antenna.

Press Center of the Summit

Our agent

5.8 Bridge
+ 2.4 AP





5.8GHz Bridge with grid antenna as backhaul; WL-2410/AP with omni-antenna to blanket outdoor area.

The two units, Bridge and AP, and the 2 antennas are too close to each other, may cause interference and result in disconnection from time to time. Although it was working fine during the Summit, but should be corrected (separated with 3 meters) after the summit for long term use.



WL-2410/AP with 8-dbi omni antenna on ceiling in door can cover up to 200 meters, and cross 3 floors in the building without line of sight (LOS)

WL-2410/AP with 8-dbi omni-antenna in Press Center, just one AP cover the whole center and outdoor neighboring areas



Summit staff, delegate and Journalist laptop PC wirelessly connected by centrino



Component 1

WL-5805 + PG-5822

Under **Bridge** Mode : as the data 'backbone' for connecting the AP unit on nodes.



Network Component 2

**WL-2410/AP unit
1 watt**

**With OM-2415
Omni antenna 15-dbi**

**Wire (by CAT5) connected to
WL-5805/Bridge **to carry the
clients outdoor.****



Network Component 3

**WL-2410/AP unit
1 watt**

**With OM-2405 or OM-2408
Omni antenna 5-dbi/8-dbi**

**Wire (by CAT5) connected to
WL-5805/Bridge **to carry the
clients in door.****



Network
Component 4
WL-2402/WEC



**WL-2402/WEC unit
200mW**

**With rubber omni, 3-dbi
antenna**

Network Component 5

Other Wi-Fi complied devices



PCMCIA



Centrino

USB adapter, PCI, Wi-Fi compliance

Component 6

W-1300 Network Administrator for client authentication and management.



1200 subscriber account
DHCP server
User Management
Current Status Monitoring
Route re-Direction and Extension
Bandwidth management

500 users on-line simultaneously
Authentication
Traffic Report
Firewall
Service Expansion
Billing.....

Component 7

MH-200 Homing System

For balancing and managing 2 x WAN connection and data flow



X-LIN
Innovation
Thank you !

Hotware International Co., Ltd.

www.hotware.com.tw

business@hotware.com.tw

Tel : +886-3-4639125

Fax ; +886-3-4639367

Integration Center

integrate@hotware.com.tw